



ForestVu

ForestVu from D-Tec, the world leaders in Video Smoke Detection (VSD), is specifically designed to provide fire detection in outdoor environments allowing an operator to respond to a potentially devastating fire before it can take hold.

Using in-house developed algorithms ForestVu is able to identify smoke and flame generation at the source. Early identification using this method allows the appropriate action to be taken in the shortest possible time. The uniqueness of ForestVu is its ability to accurately detect smoke and flame patterns and differentiate between them and other on screen movement patterns.

Each ForestVu can connect up to 8 cameras and should an alarm occur, the ForestVu will automatically trigger pre and post event recording, protecting the video for future evidential use, whilst simultaneously alerting any associated fire system or control centre to a potential risk. A PTZ camera can then automatically pan to the alarmed area which would allow the control centre to visually confirm the activation and the severity, increasing response information whilst removing the cost of unnecessary site visits and emergency service callouts.

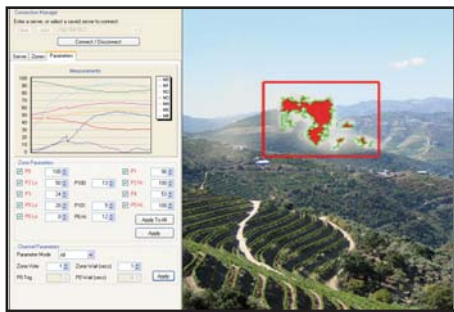
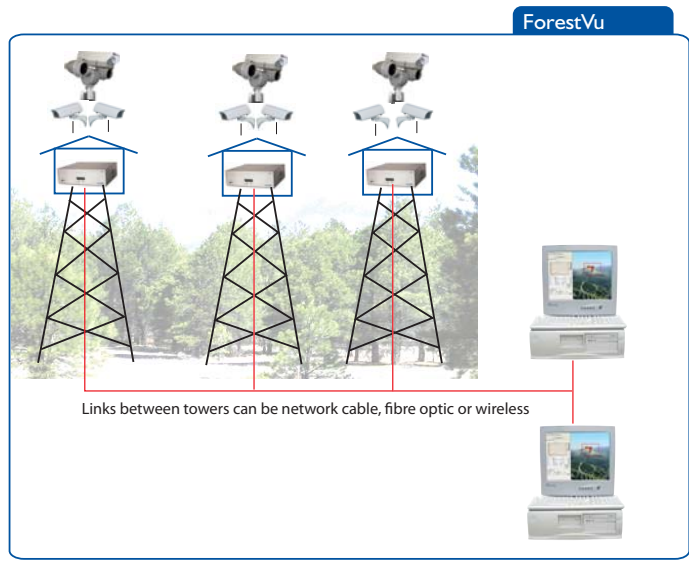
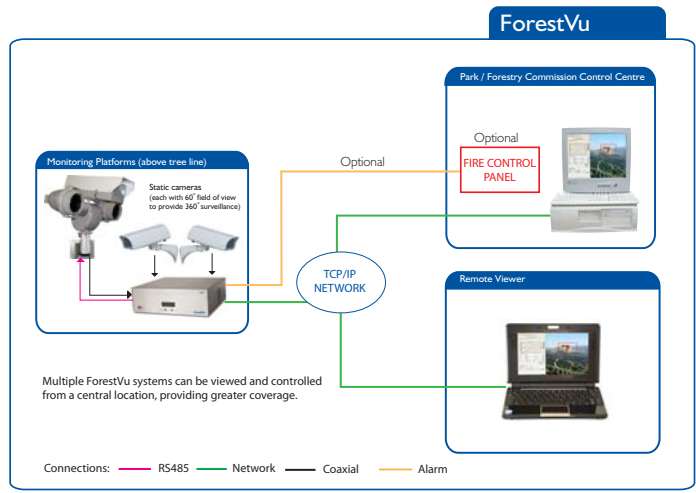
Already successfully deployed in Portugal, Greece and Australia, ForestVu units can be networked together to a control centre to expand the number of cameras and therefore protect a greater area.



Features

- Visual confirmation of any alarm on any number of viewing positions
- Integration with Fire Control Panel if required (either at tower or central position)
- 8 camera inputs. Usual configuration is 6 Static Cameras (for 360° coverage) one PTZ Camera (via RS485) to zoom in on any incident or for general viewing; and one spare.
- Integrated digital recording for each camera (pre and post alarm)
- Up to 16 adjustable detection zones per camera (to aid concentrating on specific high risk area if needed)
- 16 alarm inputs (N/O or N/C contacts) and 16 Relay Outputs, all fully programmable.
- Central monitoring with bandwidth limitation for avoidance of network congestion.
- Dial-on-alarm sends images to remote units via ISDN, PSTN or Ethernet
- SMS and e-mail reporting of events
- Can use existing LAN/TCP-IP networks if fitted
- Firewall and password protected.
- On line upgrades and maintenance so no costly travel required





Detector Technologies Limited, Telford Road, Bicester, OX26 4LB
 Tel: (+44) 870 458 1517 Fax: (+44) 870 458 1518 Email: info@dtec-fire.com